

# Victorian Heritage Database Report

Report generated 19/02/19



## Royal Melbourne Regiment Drill Hall



ROYAL MELBOURNE REGIMENT  
DRILL HALL SOHE 2008



11488 Royal Melbourne Regiment Drill  
Hall Front Portico 11 Sept 2006 mz



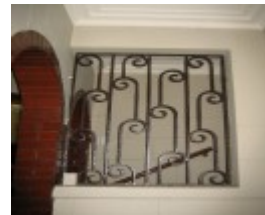
11488 Royal Melbourne Regiment Drill  
Hall Front Detail 11 Sept 2006 mz



11488 Royal Melbourne Regiment Drill  
Hall Corner Detail 11 Sept 2006 mz



11488 Royal Melbourne Regiment Drill  
Hall Vent Detail 11 Sept 2006 mz



11488 Royal Melbourne Regiment Drill  
Hall Wrought Iron Screen Detail 11 Sept  
2006 mz



11488 Royal Melbourne Regiment Drill  
Hall Officers' Mess Bench 11 Sept 2006  
mz



11488 Royal Melbourne Regiment Drill  
Hall Officers' Mess Cornice and Ceiling  
Detail 11 Sept 2006 mz



11488 Royal Melbourne Regiment Drill  
Hall Exterior Window Detail 11 Sept  
2006 mz



11488 Royal Melbourne Regiment Drill  
Hall Exterior Detail 01 11 Sept 2006 mz



11488 Royal Melbourne Regiment Drill  
Hall Exterior Detail 02 11 Sept 2006 mz



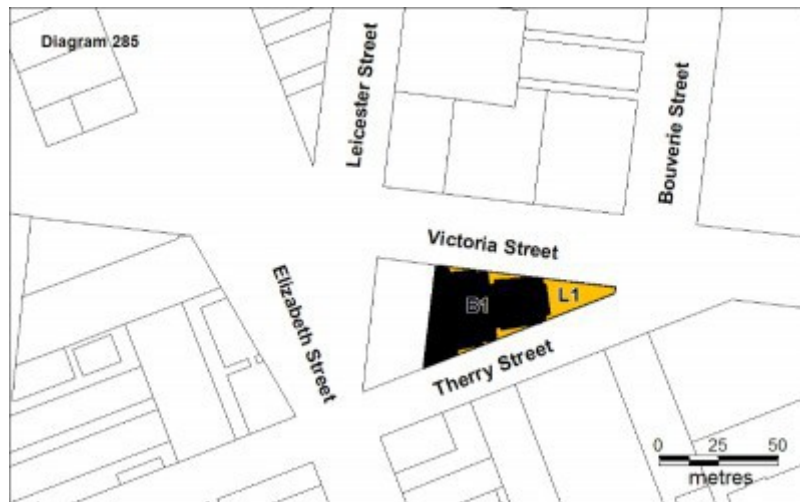
11488 Royal Melbourne Regiment Drill  
Hall Drill Hall Ceiling 11 Sept 2006 mz



11488 Royal Melbourne Regiment Drill  
Hall Hall Interior 11 Sept 2006 mz



11488 Royal Melbourne Regiment Drill  
Hall Band Gallery 11 Sept 2006 mz



11488 Royal Melbourne Regiment Drill Hall Plan Dec 06 mz

---

## Location

49-53 VICTORIA STREET MELBOURNE, Melbourne City

## Municipality

MELBOURNE CITY

## Level of significance

For public view

## Victorian Heritage Register (VHR) Number

H0285

## Heritage Overlay Numbers

HO951

## Heritage Listing

Vic. War Heritage Inventory

---

### Statement of Significance

Last updated on - April 19, 2007

What is significant?

The Royal Melbourne Regiment Drill Hall was built for the Regiment in Victoria Street in 1937 to designs prepared by Commonwealth architect George H Hallendal as part of a general improvement in military facilities prior to the Second World War. Hallendal designed most of Victoria's drill halls during the post 1935 phase of military construction. Each of these drill halls were built specifically for the unit that was to occupy the building. The Royal Melbourne Regiment Drill Hall includes offices, mess rooms, lecture rooms, stores, a basement firing range and a caretakers flat. The building was used by the regiment before the Second World War, and for various other defence purposes during and after the war, such as providing medical outpatient services in 1945 for the 2nd Battalion.

The Royal Melbourne Regiment originally formed in 1854 as the Melbourne Volunteer Rifles, becoming the City of Melbourne Regiment in 1927, the Royal Melbourne Regiment in 1935 and then the Royal Victorian Regiment in 1948. The unit served in the Boer War, the First World War and the Second World War. As Melbourne's "own Regiment" the Royal Melbourne had particularly close ties with the City of Melbourne.

The building is a large structure, partly two storey, on a triangular city edge site. The exterior is predominantly of red brick, with banding of cream brick. The main east elevation is dominated by a portico of rendered aerofoil profiled piers within a rectangular frame. Details such as exterior ventilator grills, tall narrow steel framed windows and a stepped plan form add to the building's architectural character. The interior detailing features varnished timber panelling and trims, and decorative plaster mouldings. A recurring ornamental element, internally and externally, are wrought iron screens with a common decorative motif. The eastern, front portion of the building includes facilities for the higher ranks, including the officers' mess on the first floor which features a high coved and ribbed ceiling, an inglenook fireplace area, and a built-in bar. The ground floor features offices, the sergeants' mess and various utility spaces.

The rear, western, portion of the building includes offices and the drill hall itself which features a stepped decorative Moderne detailed plaster ceiling, brick pilasters with fluted capitals and a prominent band gallery that overlooks the hall.

How is it Significant?

The Royal Melbourne Regiment Drill Hall is of architectural and historical significance to the State of Victoria.

Why is it Significant?

The Royal Melbourne Regiment Drill Hall is architecturally significant as an outstanding and highly detailed example of Moderne architecture. Of note is the practical response to the triangular site, the clearly demarcated spaces and functions and the particularly high quality of the building's detailing and decoration. The Royal Melbourne Regiment Drill Hall is of architectural significance as one of the major drill halls designed by Commonwealth Government architect George Hallendal.

The Royal Melbourne Regiment Drill Hall is of historical significance as one of the most intact of the red brick drill halls designed by the Works Branch of the Commonwealth Department of the Interior in the 1935 - 1939 period. It demonstrates its original drill and military administrative functions, through the planning of its internal spaces and through the extant original fittings and finishes. It is of historical interest as a building constructed as part of the nation's military build up just prior to the Second World War. The Royal Melbourne Regiment Drill Hall is of historical significance for its associations with the Royal Victorian Regiment.

Known as Melbourne's 'own Regiment', the Royal Melbourne Regiment Drill Hall is of local social significance for its close ties to the City of Melbourne.

Heritage Act Categories    Heritage place,

Other Names                    DRILL HALL, ROYAL MELBOURNE REGIMENT HEADQUARTERS,

Hermes Number                125395

Property Number

---

## Physical Conditions

State of the Historic Environment survey report - Fair condition. See Events.

## Veterans Description for Public

The Royal Melbourne Regiment Drill Hall, at 49 - 53 Victoria Street, Melbourne City, was built for the Regiment in Victoria Street in 1937 to designs prepared by Commonwealth architect George H Hallendal as part of a general improvement in military facilities prior to the Second World War. Hallendal designed most of Victoria's drill halls during the post 1935 phase of military construction. Each of these drill halls were built specifically for the unit that was to occupy the building. The Royal Melbourne Regiment Drill Hall includes offices, mess rooms, lecture rooms, stores, a basement firing range and a caretaker's flat. The building was used by the regiment before the Second World War, and for various other defence purposes during and after the war, such as providing medical outpatient services in 1945 for the 2nd Battalion, until its sale in c.2000.

The Royal Melbourne Regiment originally formed in 1854 as the Melbourne Volunteer Rifles, becoming the City of Melbourne Regiment in 1927, the Royal Melbourne Regiment in 1935 and then the Royal Victorian Regiment in 1948. The unit served in the Boer War, the First World War and the Second World War. As Melbourne's "own Regiment" the Royal Melbourne had particularly close ties with the City of Melbourne.

The building is a large structure, partly two storeys, on a triangular city edge site. The exterior is predominantly of red brick, with banding of cream brick. The main east elevation is dominated by a portico of rendered aerofoil profiled piers within a rectangular frame. Details such as exterior ventilator grills, tall narrow steel framed windows and a stepped plan form add to the building's architectural character. The interior detailing features varnished timber panelling and trims, and decorative plaster mouldings. A recurring ornamental element, internally and externally, are wrought iron screens with a common decorative motif. The eastern, front portion of the building includes facilities for the higher ranks, including the officers' mess on the first floor which features a high coved and ribbed ceiling, an inglenook fireplace area, and a built-in bar. The ground floor features offices, the sergeants' mess and various utility spaces. The rear, western, portion of the building includes offices and the drill hall itself which features a stepped decorative Moderne detailed plaster ceiling, brick pilasters with fluted capitals and a prominent band gallery that overlooks the hall. It is important as one of the most significant 1930s Moderne style public buildings in Melbourne.

## Extent of Registration

/n

1. All of the building known as The Royal Melbourne Regiment Drill Hall and shown as B1 on Diagram 285 held by the Executive Director

/n

2. All of the land shown as L1 on Diagram 285 held by the Executive Director being the land described in Certificate of Title Volume10553 Folio 511

*This place/object may be included in the Victorian Heritage Register pursuant to the Heritage Act 2017. Check the Victorian Heritage Database, selecting 'Heritage Victoria' as the place data owner.*

*For further details about Heritage Overlay places, contact the relevant local council or go to Planning Schemes Online <http://planningschemes.dpcd.vic.gov.au/>*